

FIRST-CLASS RESERVOIRS



PRODUCT CATALOGUE



FIRST-CLASS RESERVOIRS



**PROCESS TANKS FOR
WELL BORING**

- /// MUD CIRCULATION SYSTEMS
- /// ADDITIONAL TANK UNITS
- /// PURIFICATION UNITS
- /// PURIFICATION EQUIPMENT



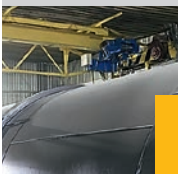
**TANKS FOR PETROLEUM
PRODUCT PROCESSING**

- /// GAS SEPARATORS
- /// SCREEN GAS SEPARATORS
- /// FLARE SEPARATORS
- /// BULK CAPACITY TANKS
- /// PROCESS VESSELS



**STORAGE AND
TRANSPORTATION TANKS**

- /// VESSELS
- /// SILO AND BUNKERS
- /// TANK TRAILERS
- /// WATER TANKS
- /// WATER TOWERS



page
5

**ABOUT
URALSPECMASH
COMPANY**

- ADVANTAGES 7
- PRODUCTION 8
- QUALITY CONTROL 9
- LICENSES AND CERTIFICATES 9



page
10

**PROCESS
TANKS FOR
WELL DRILLING**

- CIRCULATION SYSTEMS
FOR MUD PURIFICATION AND MIXING 11
- ADDITIONAL TANK UNITS 13
- SHAKER AND HYDROCYCLONE UNITS 14
- SHALE SHAKERS 15



page
16

**TANKS FOR
PETROLEUM PRODUCT
PROCESSING**

- GAS SEPARATORS..... 17
- SCREEN GAS SEPARATOR..... 18
- FLARE SEPARATOR..... 19
- STEEL BULK CAPACITY TANKS..... 20
- PROCESS VESSELS..... 21



page
22

**STORAGE
AND TRANSPORTATION
TANKS**

- UNDERGROUND STORAGE TANKS..... 23
- STORAGE SILO 24
- HORIZONTAL RESERVOIRS..... 25
- TANK TRAILERS 27
- WATER TOWERS..... 28
- WATER STORAGE TANKS..... 29



page
30

**WELDMENT
DESIGNS**

- WELDED STEEL TUBES 31
- TANK LADDERS..... 32
- MODULAR CONTAINERS..... 33



page
34

SERVICES

- ANTI-CORROSION TREATMENT..... 35
- ABRASIVE BLAST TREATMENT..... 35
- PLASMA CUTTING
AND MECHANICAL TREATMENT 35



ABOUT THE COMPANY

- ADVANTAGES
- PRODUCTION
- QUALITY CONTROL
- CERTIFICATES



URALSPECMASH COMPANY

Uralspecmash, LLC Company is one of the leading manufacturers producing vessels, tanks and special equipment for chemical, agricultural, oil and gas industry, and drilling operators.

The company performs full range of works: equipment constructional design, manufacturing, packing, delivery and installation. Production line includes: circulation systems for drilling rigs, drainage equipment, storage and transportation containers for oil and petroleum products, reservoirs (for water, construction materials and food products), steel bulk capacity vessels, separators, heat-exchange equipment. All products are available «turnkey» in full accordance with Customer's corporate standards.

Uralspecmash Company has 15-year experience of effective cooperation with leading Fuel and Energy Complex companies in Russia. Among the customers of the Company are: Russian Railways, drilling operator Eurasia, OJSC Uralkali, the enterprises of the group Gazprom, LUKOIL, Rosneft, Transneft and others. Furthermore, Uralspecmash has experience in implementing process-complicated projects unrelated to oil production. At present, Uralspecmash is participating in construction of the Perm GRES Fourth power plant in Dobryanka town, Perm Krai.

Uralspecmash manufacturing complex is located in a large industrial cluster of the Perm Krai – the city of Krasnokamsk (40 km from Perm). Total working area is over 3000 m² with more than 250 tonnes of finished products constituting a monthly production volume.

Corporate team consists of construction engineers, production supervisors, commercial department specialists, supply department and accounting department. The staff includes 134 employees, with 44 technical and engineering experts. The staff competence has been confirmed by industry-relevant diplomas, certificates and work authorizations.

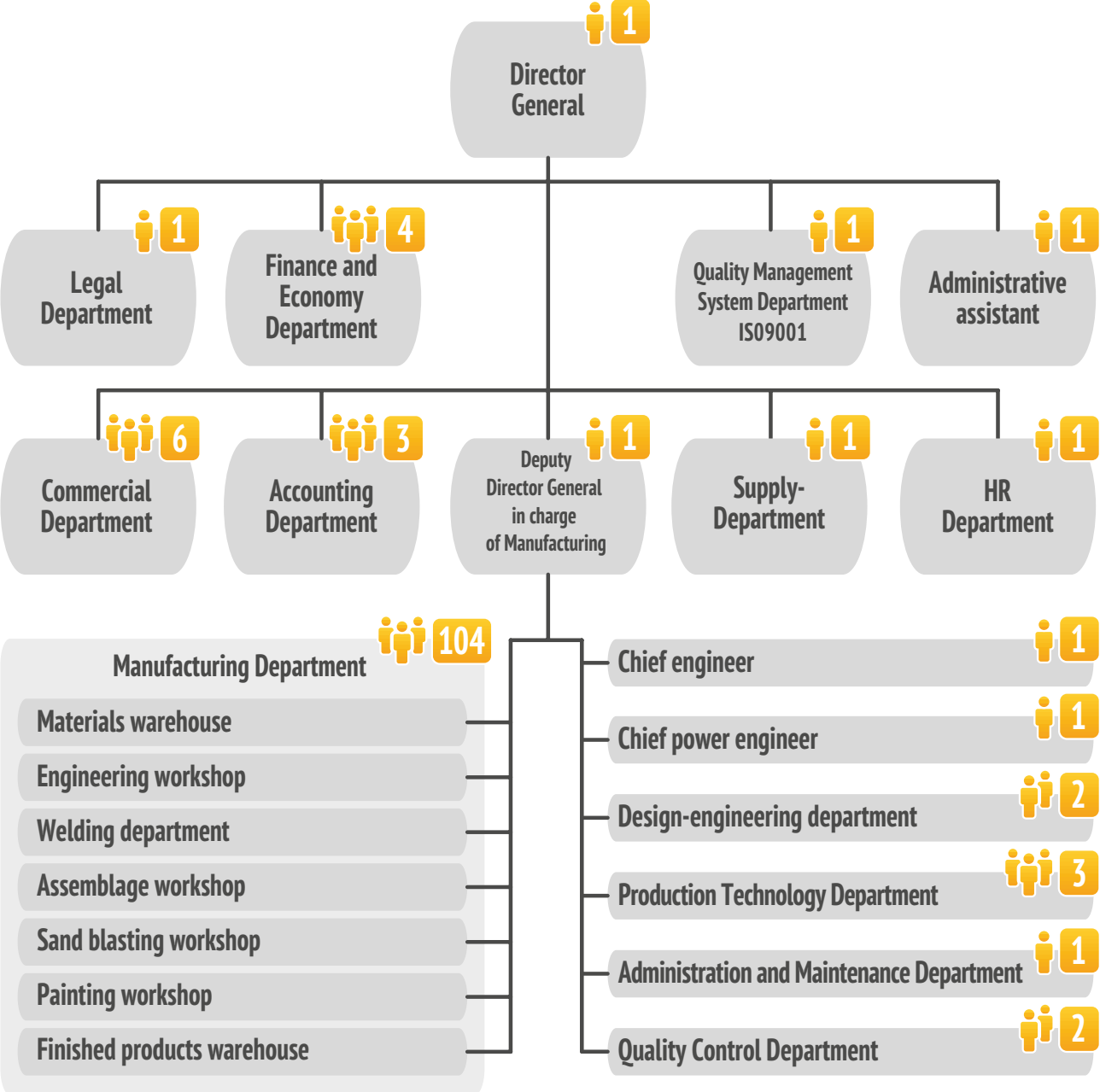
Office address

Russia, 614000, city of Perm,
Sovetskaya st. 51a, 3rd floor
Tel.: +7 (342) 258-08-52
sekretar@uralrezerv.com
www.uralrezerv.com

Manufacturing centre

Russia, 617065, city of Krasnokamsk,
Shosseinaya st., 43
Tel.: +7 (342) 258-08-52







ADVANTAGES

- A team of young, active, persevering managers and technical specialists are ready to solve production tasks of customers and partners at any moment.
- Own production resources and efficient logistics allow to produce even the most complex products and deliver them to a customer in time.
- The quality management system ISO 9001 guarantees the observance and control of all production and technological processes, as well as effective coordination with a customer.
- Manufacturing application of special-purpose equipment reduces value of manufacturing, improves quality and order lead time.
- Welding procedure qualification and NACWP (National Attestation Committee on Welding Practice) certified welding specialists guarantee adherence of technologies and quality control of welding works.
- The chamber and equipment for abrasive blasting allow preparing products for anti-corrosive coating in the best possible way.
- The painting chamber with air filtering and ventilation system, certified painting equipment and specialists make it possible to apply corrosion-resistant coating according to the technology of painting and GOST.
- Competent and experienced staff of Quality Control Department ensures manufacturing high quality equipment.

MANUFACTURING STAGES

Uralspecmash Company has seven manufacturing departments. They are materials warehouse, engineering workshop, welding department, assemblage workshop, sand blasting workshop, painting workshop, finished products warehouse. The quality management system, modern equipment and effective cooperation between the departments ensure optimal processing of all engineering and manufacturing cycle stages.



Coordination of a technical task

Preparation of a design documentation package

Preparation and production of assembly units

Assemblage and welding of a product

Testing

Abrasive blasting

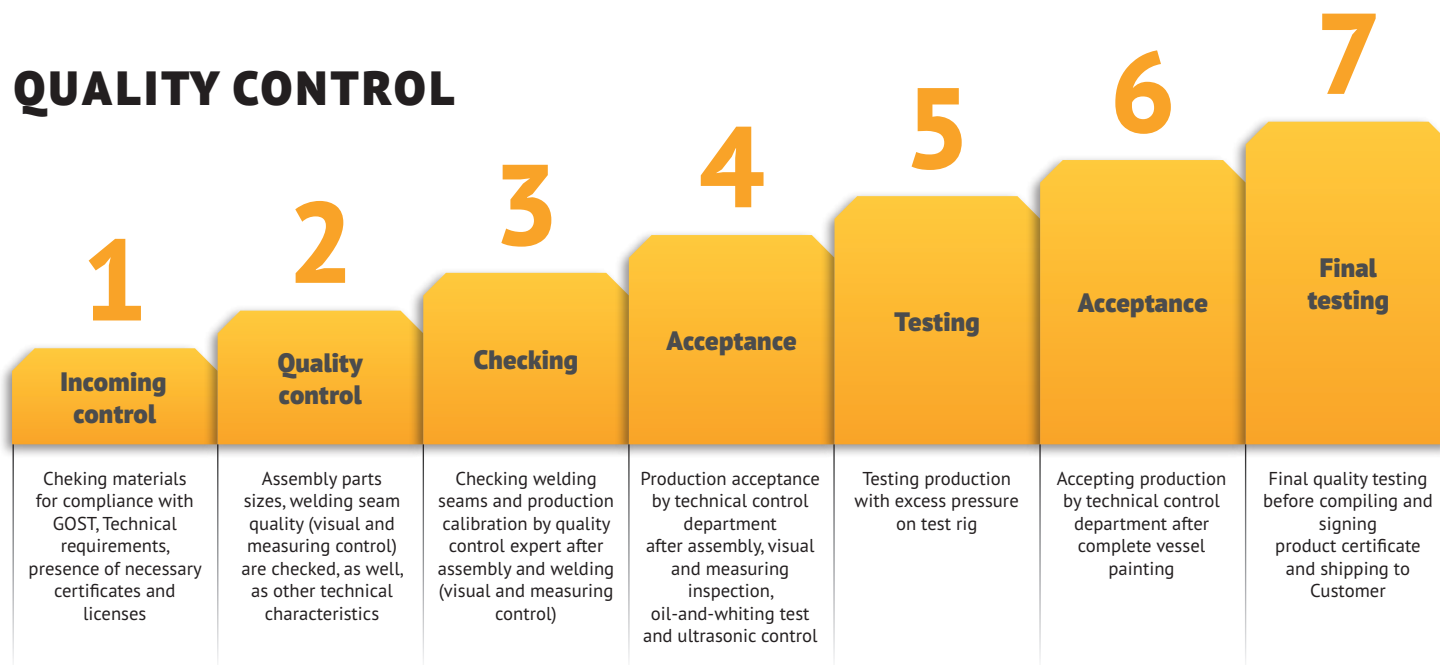
Painting of a reservoir

Acceptance testing

Product certificate preparation

Product shipment and delivery to a customer

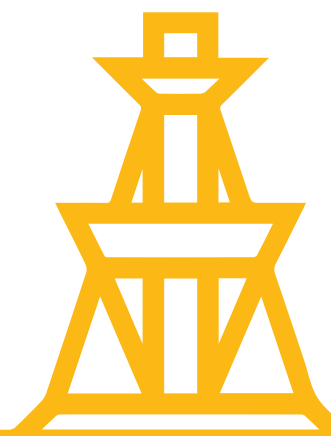
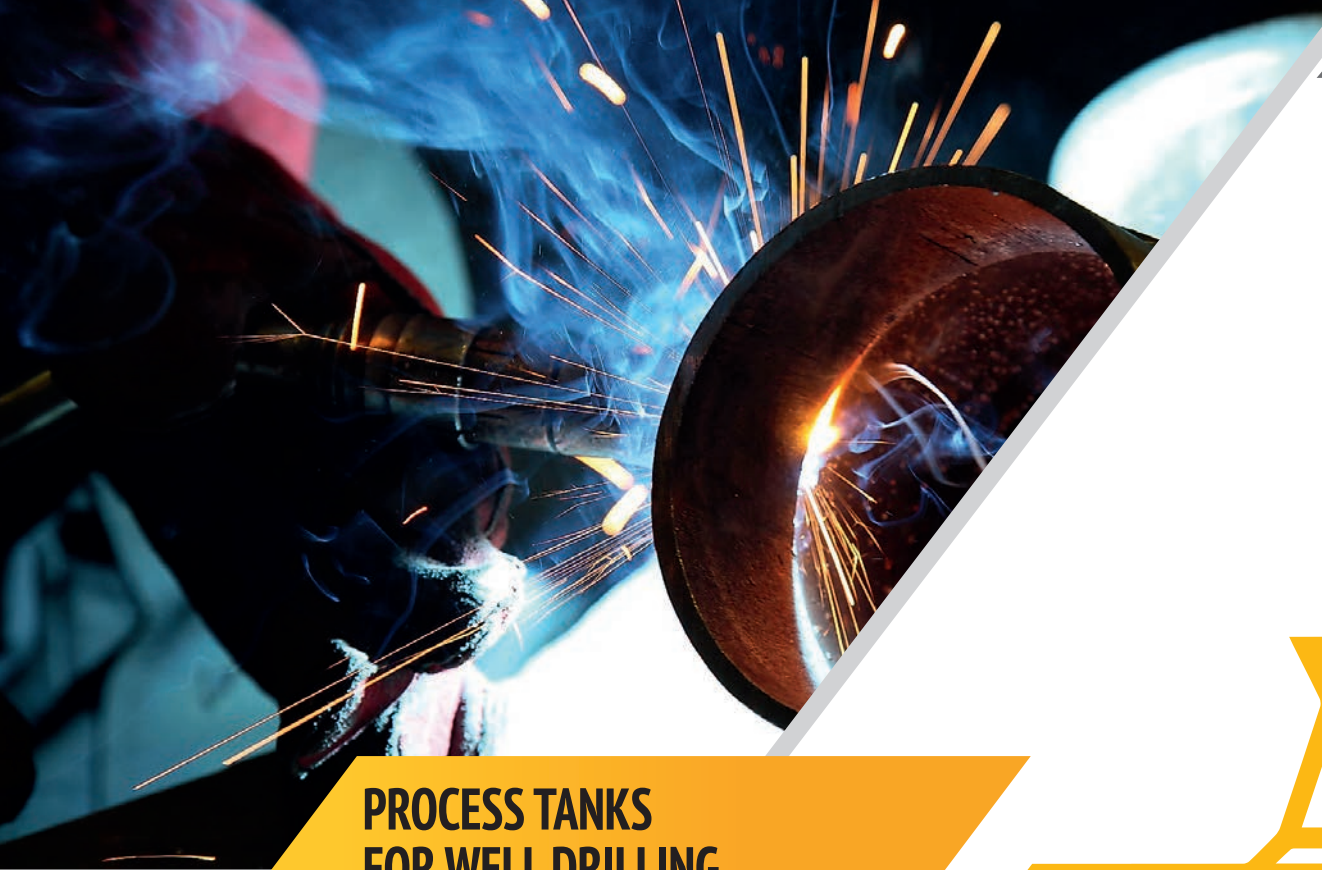
QUALITY CONTROL



LICENSES AND CERTIFICATES

Quality management system for production and installation of storage tanks, vessels, and auxiliary well-boring equipment for chemical, oil and gas production and processing industry complies with GOST 150 9001-2011 (150 9001-2008) requirements and received certificate № 5T.KU.0001.M0001805.





PROCESS TANKS FOR WELL DRILLING

- /// MUD CIRCULATION SYSTEMS
- /// ADDITIONAL TANK UNITS
- /// PURIFICATION UNITS
- /// PURIFICATION EQUIPMENT



STATIONARY CIRCULATION SYSTEMS

for mud purification and mixing

Stationary circulation system is one of the major components of the drilling rig. This equipment is designed to collect, purify and degas mud for the subsequent injection into the well.

Standard delivery contents

Pump pressure and suction lines, gutters, settlers, instrumentation and controls, plus various auxiliary equipment. The technological complex may be equipped with various types of covers, including multi-layer tents set on rigid and quick-assembly framework.

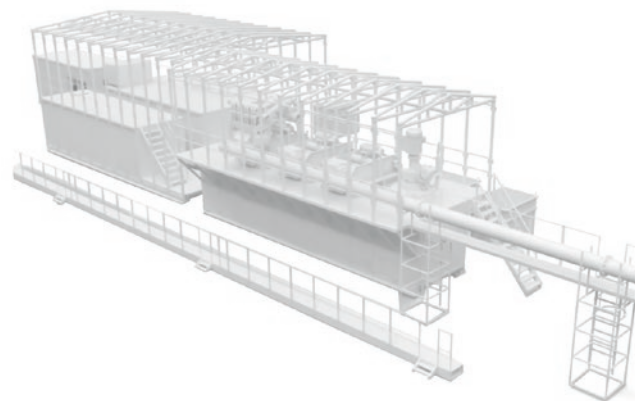
Advantages

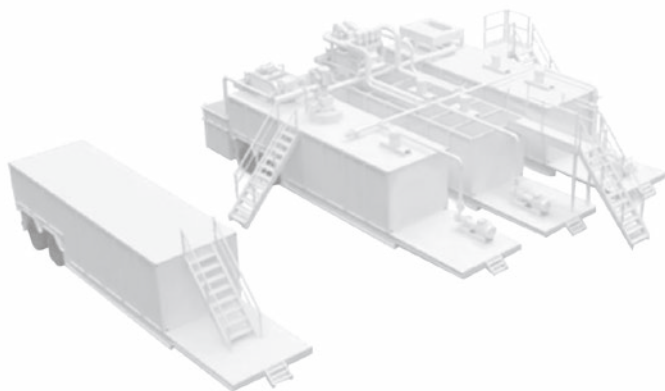
Ump pressure and suction lines, gutters, settlers, instrumentation and controls, plus various auxiliary equipment. The technological complex may be equipped with various types of covers, including multi-layer tents set on rigid and quick-assembly framework.

- Optional arctic region version includes steam heating pipework and double wall heat insulation.
- Additional equipment: LED lights, roof ventilation, heating systems and service platforms.
- The production strictly complies with oil and gas industry requirements.
- Quick installation, simple maintenance and small dimensions of the complex thanks to block-modular design.

Stationary circulation system includes

- Mud dosing and mixing units.
- Additional tank units.
- Technical water tanks.
- Mud purification, regeneration and degassing system.
- Purification, recovery and degassing system for bore mud.





MOBILE CIRCULATION SYSTEMS for mud purification and mixing

Mobile circulation system includes pump pressure and suction lines, gutters, settlers, instrumentation and controls, various auxiliary equipment and low-voltage kit devices.

Mobile circulation systems used for mud pumping from the well into tanks, quality rock filtering, followed by degassing. The processing complex comprises mud injection and control system, additional tank unit and mud purification, regeneration and conditioning equipment.

Circulation systems produced by Uralspecmash provide mud mixing with pre-set quality, composition and density parameters.

The additional tank units included in the complex offer an opportunity of creating significant drilling mud reserves.

Advantages

- Mobile circulation system block-modular design provides its small dimensions. simple maintenance and installation.
- Clay accumulation in drilling mud is reduced by 2-3 times.
- Drilling cuttings after mud purification are not mobile, which makes them easy to deactivate, transport and dispose.
- Mud purification efficiency exceeds 60%.



ADDITIONAL TANK UNITS

with process piping

Additional tank unit (ATU) is an efficient modular design for storage, reserve receiving, and transferring of mud and technical water.

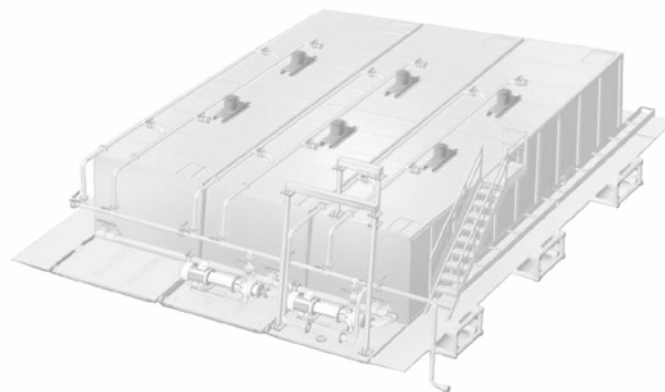
The ATU by Uralspecmach are multi-purpose units of various size range, which consist of rectangular steel tanks with a necessary technological equipment. The units are utilized in the rig circulation systems.

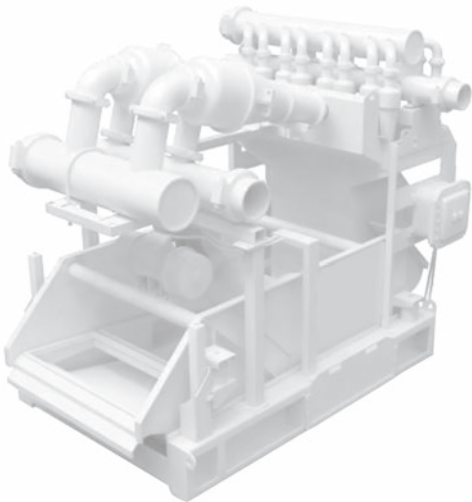
Optional equipment

- Instrumentation and controls.
- LED lights with folding telescopic mounts.
- Electrical equipment.
- Various types of pumps.

Advantages

- Top manufacturing company's readiness provides shipping and installation in a short time.
- The additional tank units can be produced in stationary version, installed on metal props or mobile, installed on steel skids for transportation within the extraction site.
- Arctic versions of the ATU are sheathed with multi-layer sandwich-panels and heat retainer. Outer tank framework is covered with durable steel sheets.
- Outer pipelines are equipped with automatic heating system.





SHAKER AND HYDROCYCLONE UNIT

Shaker and hydrocyclone unit is used in circulation systems on the drilling rigs. The installation is designated for efficient mud purification, cuttings drying and remove, as well, as for weighting of drilling mud regeneration. The equipment can be used independently or with shale shakers.

- Desilting devices and hydrocyclones have a section structure, which provides easy replacing only worn-out parts.
- Desanders are produced with high-strength materials, which service life is more than 10,000 hours.
- A diaphragm pressure gauge provides control of mud supply pressure;
- A vast choice of installation inner diameters.
- Optimal work mode can be adjusted thanks to replaceable packings for desilting devices and the hydrocyclones.

Uralspecmash hydrocyclone sieves have passed licensing for use in Russian Federation, and received required fire safety and hygiene certificates.



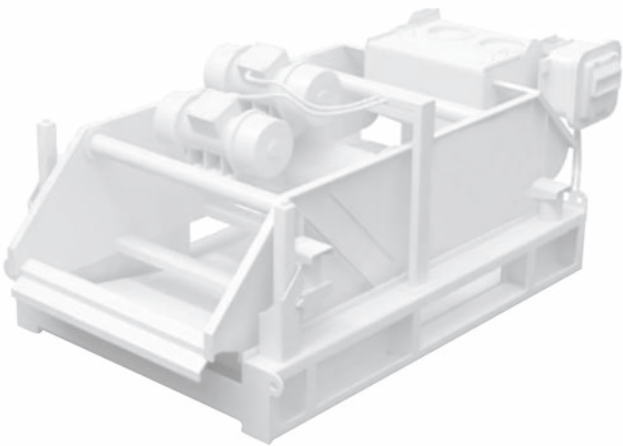
Specifications	CycLone	USM cycLone PRO
Desander dimensions	12 inches	12 inches
Desanders quantity	2 pcs.	2 pcs.
Desilting devices	4 inches	4 inches
Desanders quantity	12 pcs.	16 pcs.
Working pressure	0.3–0.4 MPa	0.3–0.4 MPa
Shale shakers quantity	3 pcs.	4 pcs.
Shaker and hydrocyclone unit dimensions, mm	3044x2044x2285	3044x2044x2285
Shaker and hydrocyclone unit weight	2285 kg	2385 kg

SHALE SHAKER

Shale shaker a high-technology equipment for mud purification from solids. It is the first stage of a circulation system on the drilling rig and may be used together with the shaker and hydrocyclone unit. The shale shakers can remove up to 20% of 75-100 µm solids.

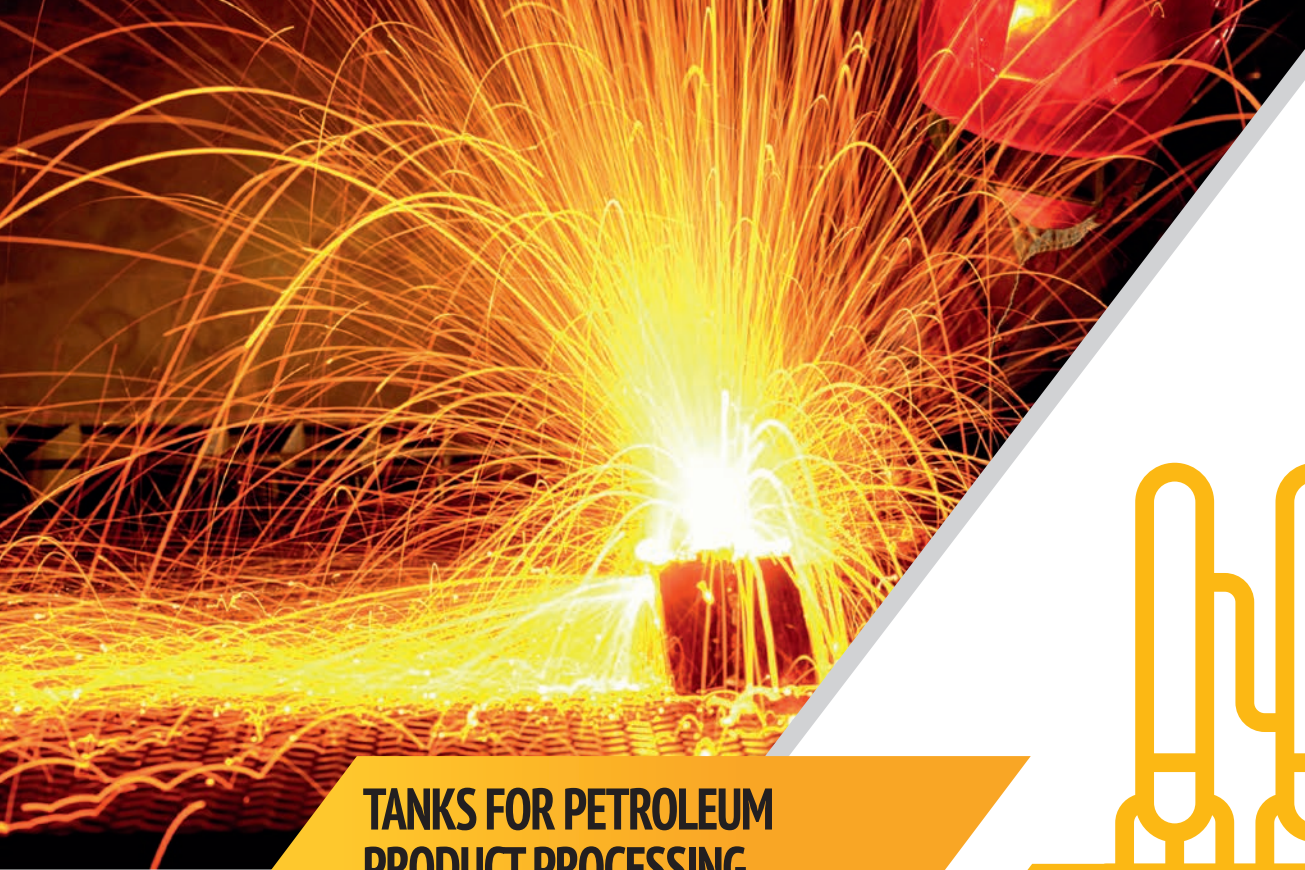
- Shale shakers features high-power, explosion-proof motors.
- High productivity and discharge rate.
- High quality purification due to fine adjustment for certain parameters.
- Higher service life of parts and assemblies thanks to high-strength alloys and composite materials use.
- Adjustable angle of screens.

The shale shaker may be equipped with water sprayers as an option. The technological equipment for mud purification by Uralspecmash has license for use in the Russian Federation and necessary fire safety and hygiene certificates.



Specifications	
AC power consumption	not exceeding 5 kVA
Production capacity	120 m³/h
Vibration force	< 6,9G
Work surface angle	-3 to +3
Worktable vibrations amplitude, mm	4, 14 to 5,96
Dimensions not exceeding, mm	3044x1749x1330
Weight not exceeding, kg	1500
Average service life	6 years





TANKS FOR PETROLEUM PRODUCT PROCESSING

- /// **GAS SEPARATORS**
- /// **SCREEN GAS SEPARATORS**
- /// **FLARE SEPARATORS**
- /// **BULK CAPACITY VESSELS**
- /// **PROCESS VESSELS**

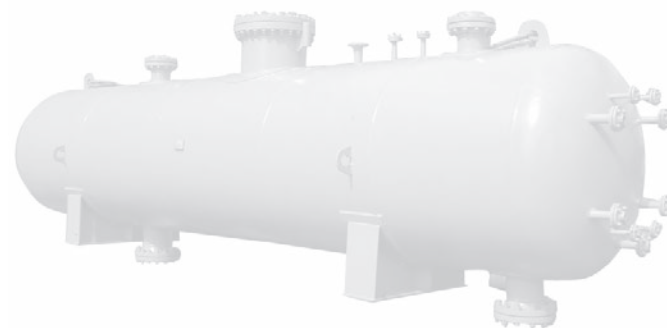


GAS SEPARATORS

Gas separator is designed as a horizontally installed cylindrical metal structure (tank) having inside:

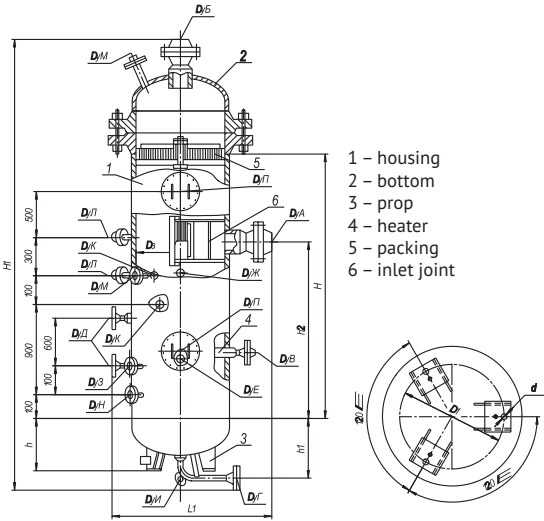
- primary liquid divider;
- primary deflecting plate;
- sheet baffle intake sections that provide even flow velocity;
- wire string demisters for gas purification;
- pipe connections providing inlet and outlet for separation products;
- instrumentation and controls.

The gas separator (oil and gas separator) is applied at the first-stage of liquid and gas dividing, and for oil purification in industrial units. The separator is designated for processing low gas liquids. It is used at oil and gas production sites, gas-distributing units and power complexes.



Capacity, m ³	Dimensions, mm	Pressure, MPa	Weight, kg
6.3	1200x2173	0.6	2800
	1200x2173	1.0	2800
	1200x2177	1.6	3200
12.5	1600x2743	0.6	4580
	1600x2743	1.0	4770
	1600x2750	1.6	5935
25	2000x2895	0.6	7300
	2000x2900	1.0	8550
	2000x2905	1.6	9550
50	2400x3015	0.6	10660
	2400x3545	1.0	12550
	2400x3550	1.6	15500





SCREEN GAS SEPARATOR

Gas separators with screen packing are used for final purification of natural and associated petroleum gas in field pre-transport gas treatment units, and for underground storage at refinery plants.

The screen gas separators have a steel structure design installed vertically. Service life – not less than 10 years. The gas separators are mounted onto lug supports.

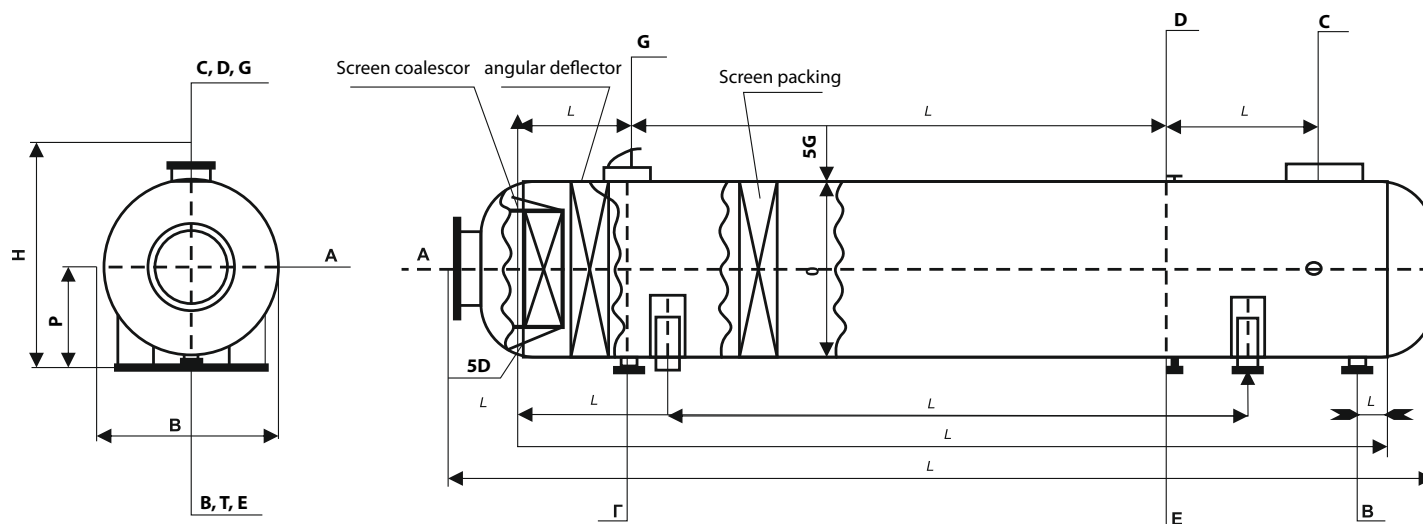
The technological equipment includes:

- pumping unit;
- gauges for measuring inside housing pressure, gas temperature and liquid volume control.



Capacity, m ³	Dimensions, mm	Pressure, MPa	Weight, kg
0.8	600x3366	2.5	860
	600x4000	4.0	1150
1.6	800x3740	1.6	1150
	800x3785	2.5	1300
4.0	800x3865	4.0	1800
	1200x4670	1.6	2200
	1200x4690	2.5	2850
8.0	1200x4770	4.0	3400
	1600x5270	1.6	3400
	1600x5350	2.5	4750
1.6	1600x5950	4.0	6200
	2000x6290	1.6	5600
	2000x6410	2.5	8100
	2000x6420	4.0	11100

FLARE SEPARATORS



Flare separators are used to separate liquid bodies from gas sprayed on to the flare. The separators make part of a flare system installed on gas and gas condensate production sites.

Capacity, m ³	Dimensions, mm	Pressure, MPa	Weight, kg
4	1000x6780	0.6	2150
25	1800x10350		5650
60	2400x13650		10300
140	3200x18115		21100





BULK CAPACITY TANKS

bulk capacity steel tanks for pressurized applications

Bulk capacity metal tanks are designated for pressurized storage, processing, transporting gas and liquid substances, as well, as for high-technology processes, including chemical and thermal ones. The tank is a pressure vessel, which is used in gas, chemical, automobile and oil processing industries.

Delivery contents

Automated control equipment and inspections holes. Optional equipment: replaceable bottoms, lids, packings, temperature sensors, control and shut-off valves.



Capacity, m ³	Type	Pressure, MPa	Intern. diam., mm	Length, mm	Height, mm	Weight, kg
2	type 2	0,6–1,6	1000		3000	1000
4	type 3		1200	3700	4450	2100
	type 1					
6.3	type 2		1600	3500	4000	3000
	type 3					
	type 2					
8	type 3		1600	4200	4800	3000
	GEE, VEE					
10	type 1		1600	5300	5900	3400
	type 2					
	type 3					
16	GEE, VEE		2000	3700	6200	3600
	type 1					
25	type 2		2400	5350	6800	4600
	type 3					
32	GEE, VEE		2400	7350	8200	7000
	type 1					
50	type 2		3000	11000	11900	13500
80	type 3					
100	type 3, GEE					
				14000	14700	20000

PROCESS VESSELS

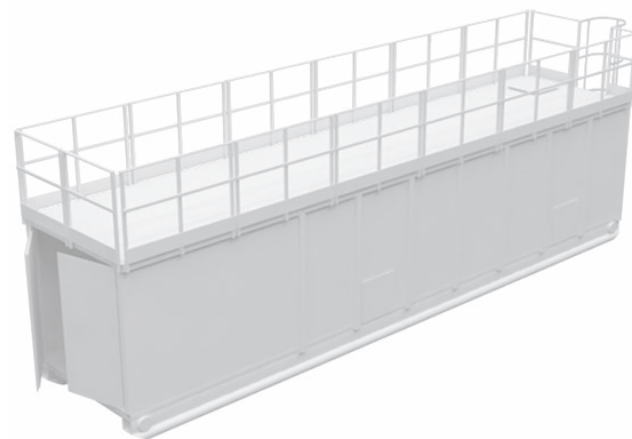
Process vessels with mixing devices are applied in various spheres of industry from oil refineries, gas-processing plants and chemical factories to food production.

Steel vessels equipped with mixers are employed in many technological processes at production sites. Main designation of these vessels, apart from storing liquids includes: mixing, emulsifying, suspending, as well, as mixing homogeneous and non-homogeneous liquid media.

Design of the vessels with mixing devices varies, depending on their designation and conditions of use.

There are several types of the vessels with mixers: full-welded vessels with mixing devices, detachable chemical reactors for homogeneous and heterogeneous systems, jacketed detachable chemical reactors, etc.

Depending on conditions of use and technical requirements for the vessels, they can be produced from a number of highly durable materials.





STORAGE AND TRANSPORTATION TANKS

- /// VESSELS
- /// SILOSES AND BUNKERS
- /// TANK TRAILERS
- /// WATER TANKS



UNDERGROUND STORAGE TANKS

Underground storage tank is a reliable vessel for storing fuel, petroleum products and other liquid substances (acids, alkali, oils) at oil refineries, chemical factories and fuel stations.

Cylindrical shaped, full-welded tank with cone bottoms, hatches and pipe fittings. The hatches positioned in the upper part of the tank are designated for petroleum products filling and discharging, and for carrying out maintenance and process works.

Delivery contents

- Pumps.
- Instrumentation and controls.
- Filters.
- Deflectors.
- Spare parts kit.
- Heater and thermoinsulation.



Capacity, m ³	Dimensions, mm	Weight, kg	Working pressure, MPa (kgf)	Group according to GOST R 5 2630- 2012	Service life, years
8	2000x2900	2500	0.07 (0.7)	1.5 (depending on process media)	20
12.5	2000x4300	3200			
16	2000x5400	3600			
20	2400x4850	3800			
25	2400x5400	4400			
40	2400x9250	6100			
63	3000x9495	7500			
100	3200x12970	9200			





STORAGE SILO

for cement and split materials

Storage silo for cement is a leak-proof metal vessel for storing cement and split materials. The Uralspecmash Company produces storage silos for cement storage to custom orders and typical designs.

Delivery contents

- Vertically installed silo with cone bottom.
- Footing.
- Hatch.
- Inside ladder.
- Outside ladder.
- Inspection platform.
- Filling pipe.
- Cement discharge flange.

Advantages

- Protects stored materials from environmental effects.
- Dosed discharge.
- Long service life.
- Fire- and explosion-proof.
- Corrosion resistant.
- Simple assembling and dismantling.

Uralspecmash metal silo complies with GOSTs and safety requirements.



Capacity, m ³	Dimensions, mm	Weight, kg	Service life, years
8	2400x5000	2000	No less than 10
20	2400x8500	3750	
40	2400x13000	5500	
60	2900x13200	8000	
120	3800x15700	12000	

STORAGE SILO

for grain and flour

Modern design silo for storing grain provides optimal conditions for keeping grain crops at any weather conditions. The silo design features a cylindrical shaped storage with cone or flat bottom. They may be used for both short-time and long-time grain crops accumulation, fine mixed feed and various dry goods storing. The silo may be used without any additional covers and keeps the contents safe from birds, pests and atmospheric precipitation.

Advantages

High-quality zinc-plated steel guarantees secure products storage, full weight control and lower storage expenses.

Advantages

- Simple and fast product discharge by gravity flow.
- Full process control with measuring gauges.
- Corrosion resistant.
- Repairability.

Capacity, m³	Dimensions, mm	Weight, kg	Service life, years
8	2400x5000	2000	No less than 20
20	2400x8500	3750	
40	2400x13000	5500	
60	2900x13200	8000	
120	3800x15700	12000	





HORIZONTAL RESERVOIRS

for oil and petroleum products

Horizontally installed metal reservoir for oil is an efficient and reliable storage for petroleum products, oils, fuels and POL. The reservoir is produced in a single- and double-wall version; a multi-section configuration is possible as well. All connections, plugs and lids are equipped with environment resistant gaskets. The reservoir design features strengthening ribs integrated into bottom and walls. Pre-designed hatches and filling/discharge devices render its operation easier. 20-years-leak-proof service is guaranteed, if operating requirements are followed.

Delivery contents

- Metal supports (for ground installation).
- Automatic control systems.
- Surveillance cameras.
- Liquid level sensors and thermometers.
- Fire and security alarm.
- Hydro- and thermoinsulation.
- Fire-fighting complexes.



Capacity, m ³	Dimensions, mm	Weight, kg	Working pressure, MPa (kgf)	Service life, years
3	1400x2150	600	0.04 (0.7)	10
5	2000x2150	800		
10	2000x2600	1300		
25	2800x4300	2200		
50	2800x8800	3700		
75	3200x9300	4800		
100	3200x12350	6000		

TANK TRAILERS

Tank trailers are used for transporting various types of liquids, and for conducting process operations at total overhaul and underground well repair (killing of well, filling-up, flushing, filling with process liquids, releasing excessive pressure).

Delivery contents

- Reinforced jacks.
- Spare wheel.
- Mudguards.
- Lights.

Types

- Two-axle tank trailer.
- Three-axle tank trailer.
- Tank semi-trailer.



Capacity, m³	Dimensions, mm	Weight, kg
5	3000x3500x2500	2500
8	3800x3500x2500	3300
12	5700x3500x2500	5000
20	9500x4000x2500	7000
25	1140x4000x2500	9500
30	12000x4000x2500	10000
40	13000x4000x2500	11500
50	13600x4000x2500	13000





WATER TOWER

Rozhnovskiy tower

Rozhnovskiy water tower provides a reliable and independent water supply for cottage settlements, agricultural entities and enterprises located far from supply lines. The structure design includes a water accumulation tank with cone bottom, and cylindrical footing, which is filled with water as well. The tower footing is installed on a reinforced concrete foundation with joining and embedded parts.

Delivery contents

The structure is equipped with water inlet and outlet pipes, automatic overflow protection device, water level sensors, and other technological equipment. Automatic pumps control does not require often checks and servicing.

Functions

- Extreme loads compensation in water supply pipeline.
- Suitable for watering agricultural crops.
- Capable of creating fire-fighting water reserve.



Capacity, tank, m³	Footing capacity, m³	Tank diameter, mm	Footing diameter, mm	Tower height, m
15	17.5	3020	2200	16.6
25	14.0	3020	2500	14.2
25	17.5	3020	3200	17.2
50	17.5	3020	3600	21.4
50	47.1	3020	3800	21.4
50	21.0	3020	5500	23.3
50	56.5	3020	6100	23.3

WATER STORAGE TANKS

for drinking water
and food industry liquids

Steel storage tank for water in container version means a reliable water supply for cottage settlements and rotation camps, emergency facilities and agricultural enterprises located remotely from centralized supply lines. Storage tanks for water in mobile version are installed in leak-proof containers, equipped with own utilities system (lighting, ventilation, heating).

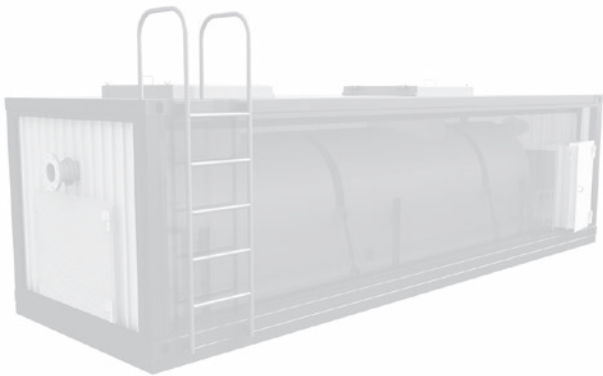
Delivery contents

- Sorption filter, pump plants and pipelines.
- Water heating and softening systems.
- Thermoinsulation.

Advantages

- Reduced major construction expenses.
- Ready-to-use water storage and discharge systems.
- Transportable by all kinds of motor vehicles.
- High repairability.
- Suitable for use in harsh environment (including arctic regions).

Capacity, m³	Dimensions, mm	Weight, kg	Working pressure, MPa (kgf)	Service life, years
1.5	1212x1520	400	0.07 (0.7) 1.0 (10) 1.6 (16) 2.5 (25)	20
5	1600x1500	800		
10	2200x3310	1340		
25	2300x6030	2310		
50	2700x9600	4320		
75	3240x9720	5680		
100	3240x12700	6800		





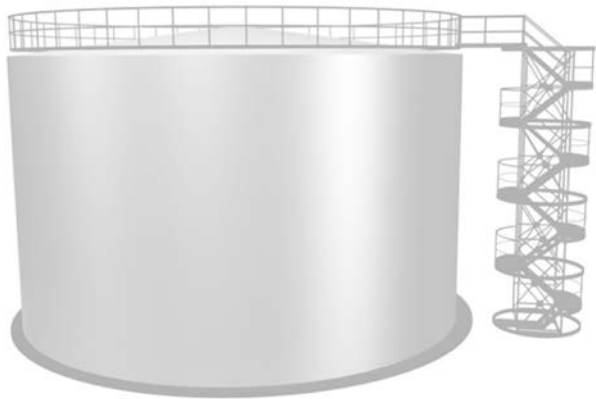
WELDMENT DESIGNS

- /// STEEL WELDED TUBES
- /// TANK TUBES
- /// MODULAR CONTAINERS
- /// PROPS
- /// LIGHTNING DIVERTERS



Technical drawing of a ship's hull structure, showing a longitudinal section with various dimensions and component labels. The drawing includes a central hull section with a total length of 22804 and a total width of 24990. The hull is divided into several segments with lengths of 500, 2470, 3000, 3000, 3000, 3000, 3000, and 500. The hull is supported by a series of vertical ribs, with labels 081, 082, 083, 084, 085, 086, 087, 088, 089, 090, 091, 092, 093, 094, 095, 096, 097, 098, 099, 100, 101, 102, 103, 104, 105, 106, 107, 108, 109, 110, 111, 112, 113, 114, 115, 116, 117, 118, 119, 120, 121, 122, 123, 124, 125, 126, 127, 128, 129, 130, 131, 132, 133, 134, 135, 136, 137, 138, 139, 140, 141, 142, 143, 144, 145, 146, 147, 148, 149, 150, 151, 152, 153, 154, 155, 156, 157, 158, 159, 160, 161, 162, 163, 164, 165, 166, 167, 168, 169, 170, 171, 172, 173, 174, 175, 176, 177, 178, 179, 180, 181, 182, 183, 184, 185, 186, 187, 188, 189, 190, 191, 192, 193, 194, 195, 196, 197, 198, 199, 200, 201, 202, 203, 204, 205, 206, 207, 208, 209, 210, 211, 212, 213, 214, 215, 216, 217, 218, 219, 220, 221, 222, 223, 224, 225, 226, 227, 228, 229, 230, 231, 232, 233, 234, 235, 236, 237, 238, 239, 240, 241, 242, 243, 244, 245, 246, 247, 248, 249, 250, 251, 252, 253, 254, 255, 256, 257, 258, 259, 260, 261, 262, 263, 264, 265, 266, 267, 268, 269, 270, 271, 272, 273, 274, 275, 276, 277, 278, 279, 280, 281, 282, 283, 284, 285, 286, 287, 288, 289, 290, 291, 292, 293, 294, 295, 296, 297, 298, 299, 300, 301, 302, 303, 304, 305, 306, 307, 308, 309, 310, 311, 312, 313, 314, 315, 316, 317, 318, 319, 320, 321, 322, 323, 324, 325, 326, 327, 328, 329, 330, 331, 332, 333, 334, 335, 336, 337, 338, 339, 340, 341, 342, 343, 344, 345, 346, 347, 348, 349, 350, 351, 352, 353, 354, 355, 356, 357, 358, 359, 360, 361, 362, 363, 364, 365, 366, 367, 368, 369, 370, 371, 372, 373, 374, 375, 376, 377, 378, 379, 380, 381, 382, 383, 384, 385, 386, 387, 388, 389, 390, 391, 392, 393, 394, 395, 396, 397, 398, 399, 400, 401, 402, 403, 404, 405, 406, 407, 408, 409, 410, 411, 412, 413, 414, 415, 416, 417, 418, 419, 420, 421, 422, 423, 424, 425, 426, 427, 428, 429, 430, 431, 432, 433, 434, 435, 436, 437, 438, 439, 440, 441, 442, 443, 444, 445, 446, 447, 448, 449, 450, 451, 452, 453, 454, 455, 456, 457, 458, 459, 460, 461, 462, 463, 464, 465, 466, 467, 468, 469, 470, 471, 472, 473, 474, 475, 476, 477, 478, 479, 480, 481, 482, 483, 484, 485, 486, 487, 488, 489, 490, 491, 492, 493, 494, 495, 496, 497, 498, 499, 500, 501, 502, 503, 504, 505, 506, 507, 508, 509, 510, 511, 512, 513, 514, 515, 516, 517, 518, 519, 520, 521, 522, 523, 524, 525, 526, 527, 528, 529, 530, 531, 532, 533, 534, 535, 536, 537, 538, 539, 540, 541, 542, 543, 544, 545, 546, 547, 548, 549, 550, 551, 552, 553, 554, 555, 556, 557, 558, 559, 560, 561, 562, 563, 564, 565, 566, 567, 568, 569, 570, 571, 572, 573, 574, 575, 576, 577, 578, 579, 580, 581, 582, 583, 584, 585, 586, 587, 588, 589, 590, 591, 592, 593, 594, 595, 596, 597, 598, 599, 600, 601, 602, 603, 604, 605, 606, 607, 608, 609, 610, 611, 612, 613, 614, 615, 616, 617, 618, 619, 620, 621, 622, 623, 624, 625, 626, 627, 628, 629, 630, 631, 632, 633, 634, 635, 636, 637, 638, 639, 640, 641, 642, 643, 644, 645, 646, 647, 648, 649, 650, 651, 652, 653, 654, 655, 656, 657, 658, 659, 660, 661, 662, 663, 664, 665, 666, 667, 668, 669, 670, 671, 672, 673, 674, 675, 676, 677, 678, 679, 680, 681, 682, 683, 684, 685, 686, 687, 688, 689, 690, 691, 692, 693, 694, 695, 696, 697, 698, 699, 700, 701, 702, 703, 704, 705, 706, 707, 708, 709, 710, 711, 712, 713, 714, 715, 716, 717, 718, 719, 720, 721, 722, 723, 724, 725, 726, 727, 728, 729, 730, 731, 732, 733, 734, 735, 736, 737, 738, 739, 740, 741, 742, 743, 744, 745, 746, 747, 748, 749, 750, 751, 752, 753, 754, 755, 756, 757, 758, 759, 760, 761, 762, 763, 764, 765, 766, 767, 768, 769, 770, 771, 772, 773, 774, 775, 776, 777, 778, 779, 780, 781, 782, 783, 784, 785, 786, 787, 788, 789, 790, 791, 792, 793, 794, 795, 796, 797, 798, 799, 800, 801, 802, 803, 804, 805, 806, 807, 808, 809, 810, 811, 812, 813, 814, 815, 816, 817, 818, 819, 820, 821, 822, 823, 824, 825, 826, 827, 828, 829, 830, 831, 832, 833, 834, 835, 836, 837, 838, 839, 840, 841, 842, 843, 844, 845, 846, 847, 848, 849, 850, 851, 852, 853, 854, 855, 856, 857, 858, 859, 860, 861, 862, 863, 864, 865, 866, 867, 868, 869, 870

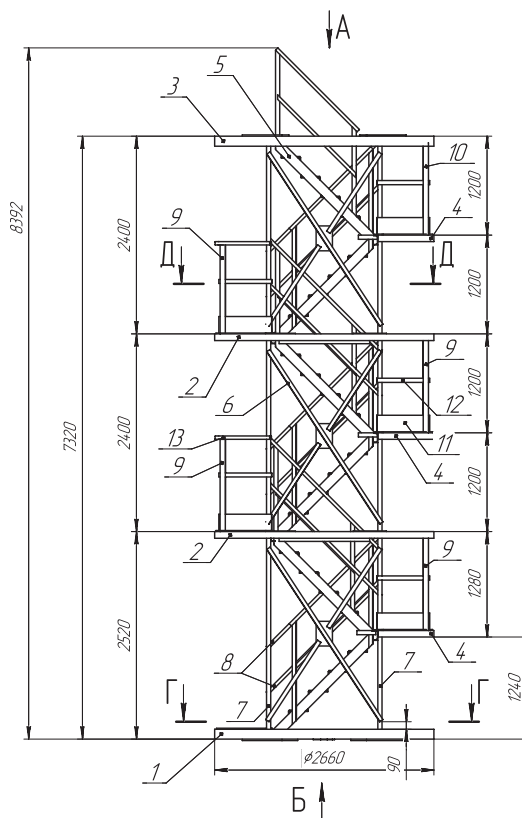
www.uralrezerv.com



TANK LADDERS

Ladders for accessing tank can be produced as a separate construction with its own foundation or as a ring construction, mounted on the tank's wall. The separate construction ladders are mounted at the tank wall upper edge or at upper reinforcement element and mid-wall point, taking into account the design's movement at construction's possible settling. Stair towers are mounted to foundation with anchor bolts.

Three types of ladders are used: stepladders for small capacity tanks (up to 500 m³), stair towers and ring-design towers.



MODULAR CONTAINERS

Modular container is a transportable building, which can house equipment and all necessary accessories, depending on its designation of use. The modular container can be equipped with necessary systems: power supply, ventilation, water supply, heating (water or electrical) or, if required, with air conditioning system.

Types:

- General-purpose modular boxes.
- Fire-proof modular boxes.
- Technological modular boxes.
- Electrotechnical modular boxes and other types.





SERVICES

- /// ANTI-CORROSION TREATMENT
- /// ABRASIVE BLAST TREATMENT
- /// PLASMA CUTTING
- /// MECHANICAL TREATING





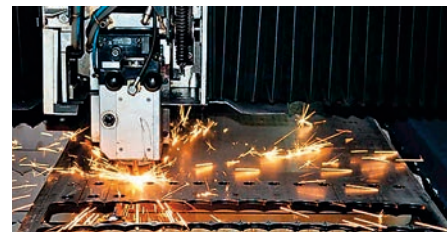
Anti-corrosion treatment

Anti-corrosion treatment is mainly applied for protecting metal from environmental effects. Professional and quality approach is a guarantee of durable protection and long service life of our production.



Abrasive blast treatment

Abrasive treatment for metal design constructions and other surfaces – is cleaning it from dirt, corrosion, combustion deposits, hardened petroleum products, paint-and-lacquer coatings, which is carried out by abrasive particles under a high pressure.



Plasma and mechanical treatment

Metal is cut automatically with plasma – cutting machine. Mechanical cutting is carried out by shear press and parting shear. Mechanical processing of metal: milling, finish grinding, polishing, bending.

Rent and servicing

Uralspecmash Company offers an opportunity of renting equipment, which helps you to reduce expenses sufficiently. Servicing rented equipment free of charge is also available on all stages of its use.

Installation and commissioning

The Uralspecmash Company provides fast installation and commissioning works after equipment delivery. The Company guarantees a high quality of the works to be carried out in shortest time.

Supervision installation

The Company's specialists carry out installation works at commissioning recirculation systems and other equipment. Supervision installation service simplifies and makes the installation process less time-consuming. Our technical experts control all stages of the installation: from shipping production to Client's site to its commissioning.





Russia, 614000, city of Perm,
Sovetskaya st., 51A, 3rd
floor, tel.:+7 (342) 258-08-52
www.uralrezerv.com